



Autumn 2021 Update and Latest Resources

Entrepreneurial Assessment Tool - available now for young entrepreneurs to use online

We are proud to share with you the **Better Futures Rapid Entrepreneurial Assessment Tool** - an accessible digital resource that **young refugees** can use themselves to assess their unique aptitudes and get guidance on how they can build their entrepreneurial skill set.

The **Personalised Digital Report** generated by the Assessment helps **business advisors and entrepreneurship educators** working with the **young people** to determine their next steps and ensure fast-track support for those with most potential to start a business.

WELCOME

to our Assessment

The online Self-Assessment provides an overview of entrepreneurial competencies in line with [EntreComp](#) - offering an assessment that is recognised throughout Europe.

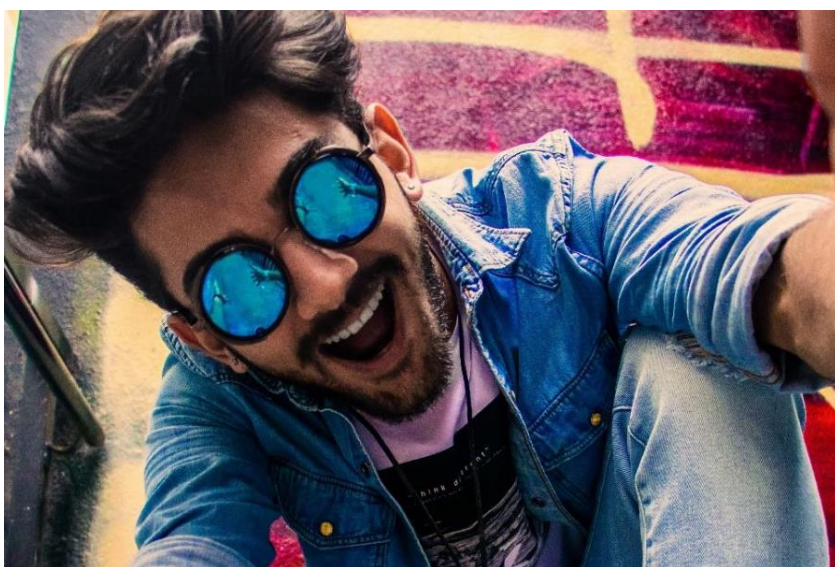
The output highlights strengths and indicates areas for development, including training recommendations to strengthen entrepreneurial skills.

Informed by Academic Research and adapted for the unique situation faced by Refugees

We believe in **helping business advisors and entrepreneurship educators** to identify and differentiate **refugees with entrepreneurial potential**.

Our 4-dimensional Rapid Entrepreneurial Assessment Tool has been constructed based on:

- 01 ● entrepreneurial competences;
- 02 ● psychological competencies;
- 03 ● social competencies; and
- 04 ● Individual experience and motivation.



Better Futures Toolkit for business advisors

Alongside the Assessment Tool, this Digital Toolkit designed for Youth-Serving Entrepreneurship Organisations helps entrepreneurship educators to:



- Record a young person's attitudes, knowledge and skills.
- Compare the findings against competencies outlined in the EU EntreComp.
- Recommend an appropriate level of entrepreneurial development support.

The Better Futures Rapid Entrepreneurial Assessment Tool is an easy-to-use digital resource that **entrepreneurship educators** can use with young refugees to assess their unique aptitudes and skills



Participants receive their individual digital report by email and can choose to download it at the end of the assessment.

Completed in < 30 minutes

Our stated aim is that our tool should be rapid. The online self-assessment tool has been designed for the young person to complete in advance, thus reducing the face to face assessment time.

The assessment may also be undertaken with guidance from an adviser as part of an initial meeting.

Competence areas assessed:

- Ideas and Opportunities
- Resources
- Into Action



Did you miss the Better Futures Practice Guide?

Our Practice Guide has been developed through consultation and collaboration with programme partners and experts based across the EU. The combination of research and on-the-ground experience with refugee enables us to present 22 of the most innovative and inclusive practices for working with newcomers from migrant and minority backgrounds.



Choose your language to get started!



More ways to get involved

For further information about the programme, including ways you can get involved, connect with us through [Facebook](#) and [LinkedIn](#) or email carol.daniels@nationalenterprisenetwork.org

www.betterfutures.how

